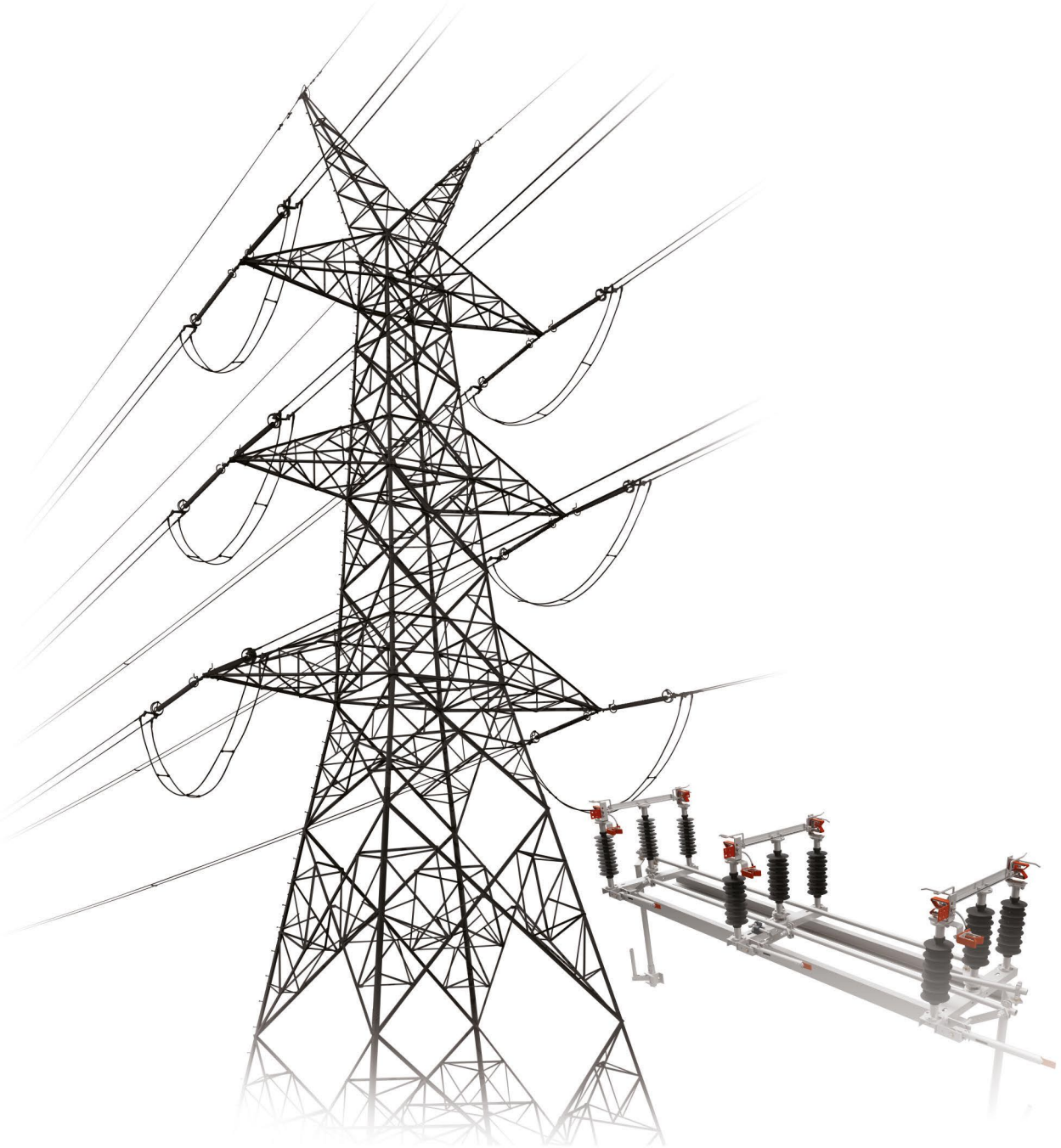


# TOPLINE<sup>®</sup>



**ENGINEER ✦ QUALITY ✦ DELIVER**

- Transmission line and Substation structure materials
- High voltage outdoor switchgears

[www.toplineswitchgear.com](http://www.toplineswitchgear.com)

# ABOUT US

# TOPLINE®

**1996** • Started as "Power Systems (Gujarat)" with a capacity of 50 MT of structures and 1,000 nos. of switchgear products at Ahmedabad, Gujarat, India

01

**2021** • Established latest fabrication and galvanizing plant with a capacity of 36,000 MT annually in Kadi, Gujarat, India

03

**2006** •

02

Established additional manufacturing facility as "Topline Switchgear Pvt. Ltd." with enhanced capacity of 6,000 MT of structures and 3 lac nos. of switchgear products at Kalol, Gujarat, India



- We are ISO 9001-2015 certified company
- System-oriented and policy-driven company
- Rich experience in the domestic and international market
- Our constant focus on Research and Development gives us continual improvement and a wide array of options which optimize our products for customer needs.
- We listen to you before speaking and with this our aim is to understand the customer's specific needs and provide an efficient delivery with low-cost advantages acting as a catalyst for a long-lasting business relationship.

## • Galvanized Structures:

- 11kV to 1200kV Transmission line Towers & Sub-Station Structures
- Telecom Towers
- Railway Structures
- Windmill Towers
- Other Fabricated and Galvanized Structures
- Earthing Materials like Strips, Electrodes and Spikes

## • Outdoor Switchgears ranging from 11 kV to 132 kV

- Isolators
- Disconnectors
- Switches
- Fuses
- Clamps and Connectors
- Line Hardwares





## Research and Development

- Continuous involvement in R&D to remain ahead of time
- Different products as per customer or field requirements such as:
  - Individually operated disconnecter switch with earth switch (ABEB Switch)
  - SCADA-based remotely operated and communicable switch with earth switch
  - Changeover switches
  - Inverted (underhung) disconnecter link
  - Stoneless Fuse (SLD0)
  - Discharge clamp for line earthing
  - Line fabricated Items and PSC pole footrest

## In-House Testing Facilities

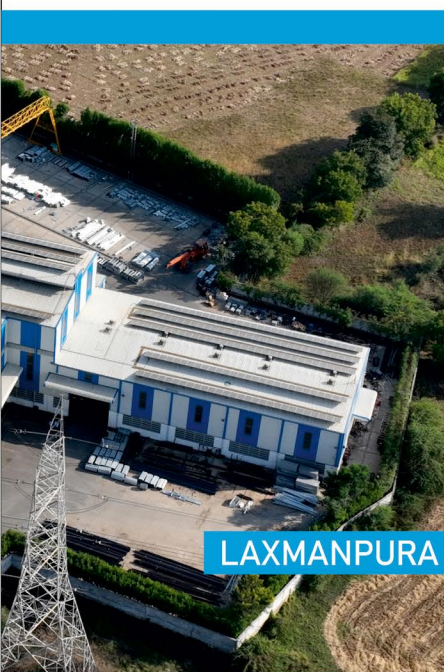
- Quality-conscious experts for in-house testing of the material
- Electrical, mechanical and chemical testing facility as per relevant global standards
- Incoming and in-process testing along with tracking right from raw material to finished product
- Inspection conducted by GETCO, GUVNL Discoms, TANGEDCO, KSEB and TPI like RITES, ERDA, CPRI, NSIC, NTPC, TATA, TUV, MECON, SGS etc. for numerous projects

## Manufacturing Facilities

- Switchgear Unit – spread over 57,000 sq. ft. with a constructed area of 30,000 Sq. Ft.
- TLT Unit – spread over 2,54,300 Sq.Ft. with a construction area of 1,37,800 Sq. Ft.
- Latest machinery such as CNC machines for precise fabrication
- 8mtr x 1mtr x 2.5mtr Galvanizing tank with closed room pickling for environment conservation

## In-House Engineering

- Well-qualified staff and software support
- In-house drawing and development team for providing customized and error-free solution for any type of structure and switchgear
- Well-qualified pre-production engineering team for delivering turnkey based solutions



## Gang Operated Air Break Isolating Switches



Application	Gang operated, tilting type suitable for outdoor application
Voltage Rating	11, 22, 33 kV
Current Rating	Up to 800 Amp. and 16/25 KA for 1/3 Sec
Applicable Standard	IS/IEC 62271 - 103

## Rotating Type Isolators and Earth Switches



Application	Gang operated, rotating type suitable for outdoor application
Voltage Rating	11kV to 132kV
Current Rating	Up to 3200 Amp. and 16/25/40 KA for 1/3 Sec
Applicable Standard	IS/IEC 62271 - 102

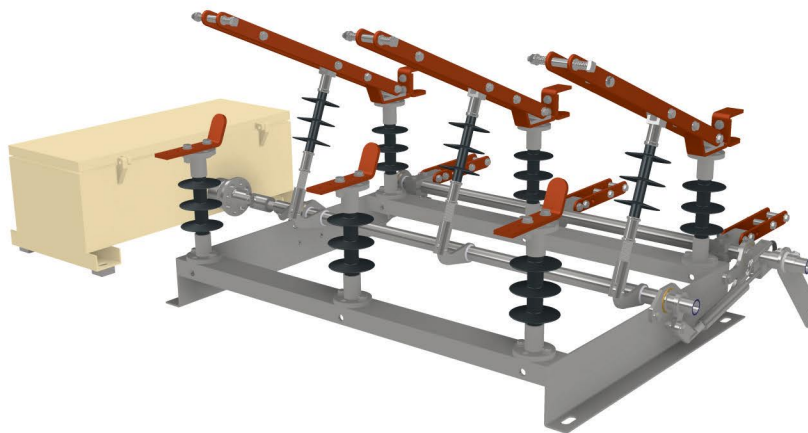


## Individual Operated Air Break Isolating Switches (Disconnecter Links)



Application	Individual operated by hook stick or operating rod suitable for outdoor application
Voltage Rating	Up to 33 kV
Current Rating	Up to 1200 Amp. and 16/25 KA for 1/3 Sec
Applicable Standard	IS/IEC 62271 - 102

## Mobile (GPRS) Operated Air Break Isolating Switches



Application	Mobile (GPRS) based remotely communicable motorized isolating switch
Voltage Rating	Up to 33 kV
Current Rating	Up to 800 Amp. and 16/25 KA for 1/3 Sec
Applicable Standard	IS/IEC 62271 - 102

## Drop out fuses and Horn Gap Fuses

Application	Horn gap or drop out type suitable for outdoor application
Voltage Rating	Up to 33 kV
Current Rating	Up to 200 Amp.
Applicable Standard	IS 9385 : 1979 & IEC 282



## Fuse Element (Link)

Application	Suitable for drop out type fuse unit or horn gap type fuse unit
Types	K or T type, Fast / Slow Blowing
Voltage Rating	11 to 33 KV
Current Rating	Up to 200 Amp
Applicable Standard	IS 9385 : 1979 & IEC 282

# LINE AND SUBSTATION ACCESSORIES SOLUTIONS



## Clamp and Connectors

Items	Bolted / Compression Type Connectors For Isolator or Breaker Pad.
	Bolted / Compression Type Connectors For CT- PT - Transformer Stud.
	T Connectors
	PI Supports Clamps
	Wedge/PG Connector
	Outdoor Lug Connectors for conductors
Rating In KV	Up to 132 KV
Applicable Standard	IS 2486 : 1993 & 5561 : 1970



## Line Hardwares

Items	Tension Hardwares Bolted and Compression Type
	Suspension Hardwares
	Earth / Shield wire Hardware
Rating In KV	Up to 220 KV
Applicable Standard	IS 2486, 2121, 9708, 10162



## Supporting Accessories for Turnkey Projects

Items	Polymeric Type Disc Insulators
	Polymeric Type Pin Insulators
	Lightning Arrestors with Accessories
	Stay Insulators
	Post Type Insulators
	ACSR or AAAC Conductors and Aluminium/Copper Tubular Busbar
	Earth Wire
Rating In KV	Up to 220 KV



## Safety Equipments

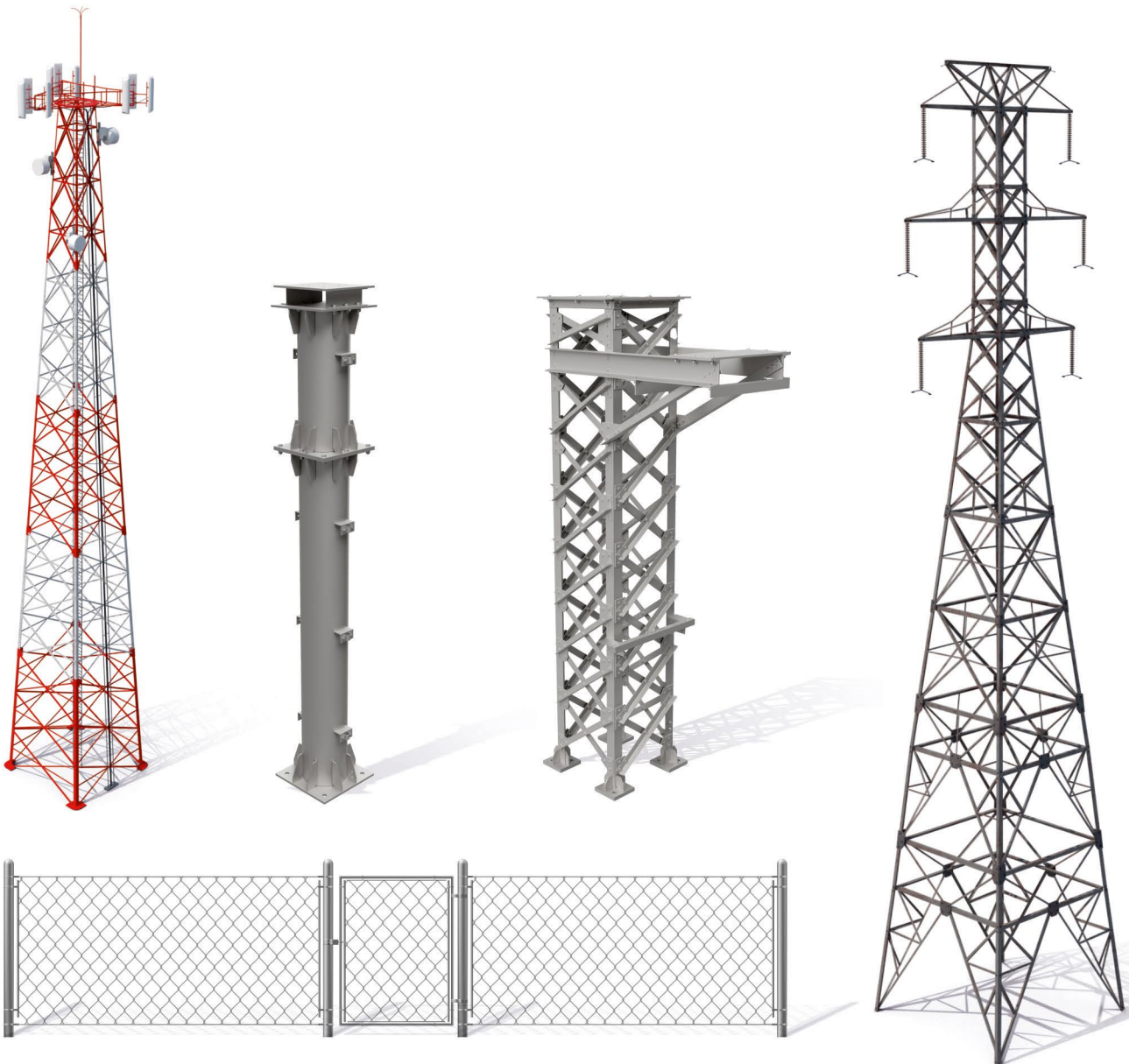
Items	Earthing / Discharge Rod
	DO Operating Rod or Hook Stick
	Cable Nullifier
	Electrical Insulated Hand Gloves
	Fiber Bird Guard Plates
	Shorting Links
	Discharge Clamp for Line Earthing & Shorting Devices
Rating In KV	Up to 220 KV





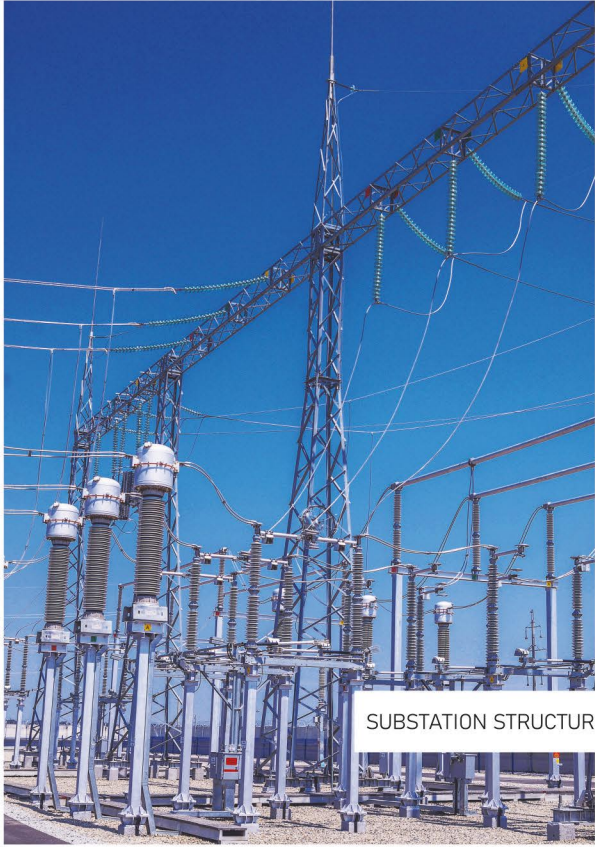
# GALVANIZED STRUCTURE

Type	HDG Steel Structure for Substation	HDG Steel Structure for Transmission Line	Telecom Towers	Wind turbine lattice towers
Rating In KV	Up to 765 KV	Up to 1200KV	Upto 100 Mtr	Upto 80 Mtr
Type of Structures	Tower, Beam, Lightning Mast & all equipments like CT, PT, Isolator, HG Fuse, LA, PI, Cable Support etc. & Substation Fencing & Gates	Tension tower, Suspension tower, Dead end tower, Line Turning tower, Tapping Tower	Lattice Towers	Guyed Stratus and self supporting lattice towers
Applicable Standard	We can deliver the material as per global standards as per the customer requirements			





# GALVANIZED STRUCTURE



SUBSTATION STRUCTURE

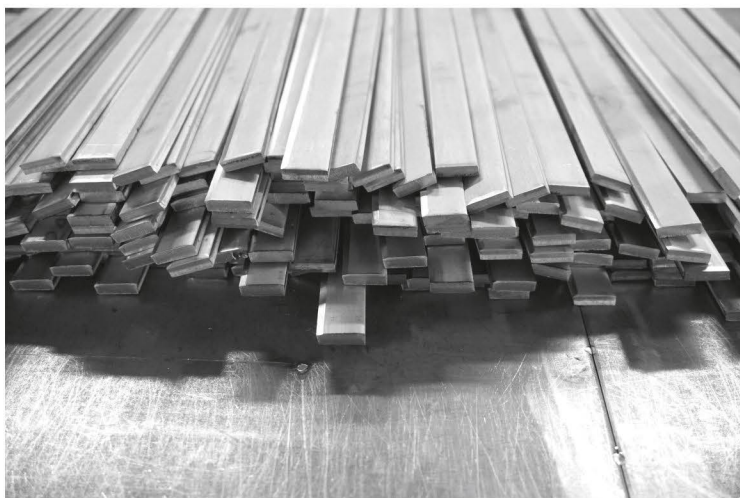
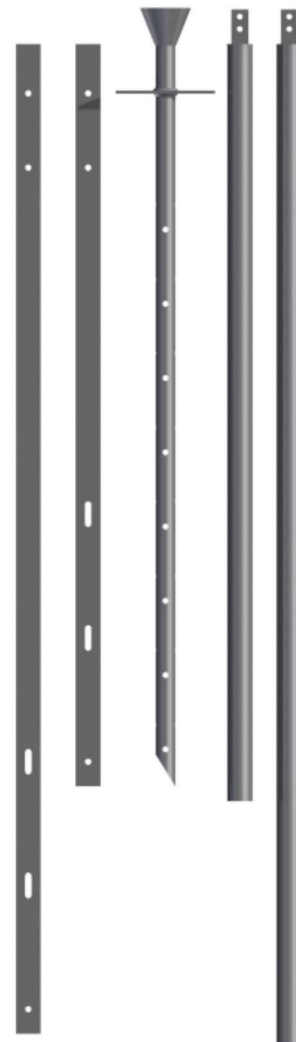
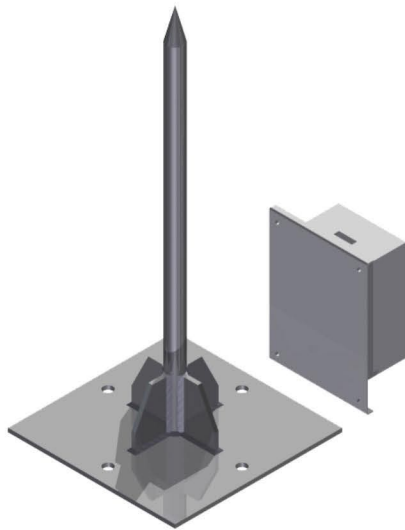


# STRUCTURE AND EARTHING SOLUTIONS

## Earthing Material

Applicable Standard:  
IS - 3043, 2062, 808, 1730, 3954, 2062, 4759, 2629, 2635

Item	Description
Hot dip galvanized earthing strip and earthing materials	Any size in straight form or in bend form in MS or GI
Pipe type earth electrode	Hot dip galvanised or GI pipe type - Flat in pipe / Pipe in cage
Plate type earth electrode	GI or CI type upto 900x900x12 mm
Maintenance free earth electrode	50 mm or 80 mm in 1 / 2 / 3 mtr Length
Back filling compound	Coal & Salt or Moisture Holding Compound
Watering pipe	As per Client Design
Chamber cover	CI Hinge Type or Fix type
Lightning spike and test link	Copper or MS
Earthing support clamps	Insulated or GI type



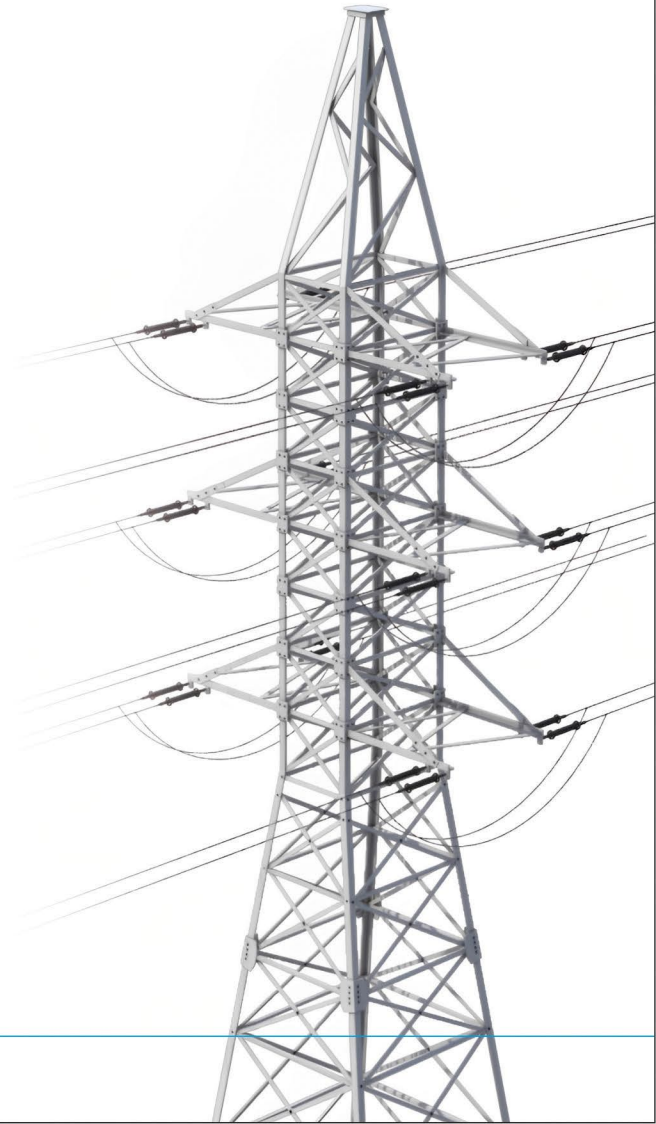


# CLIENTS

**TOPLINE**<sup>®</sup>



# VENDOR APPROVAL



# OUR GLOBAL PRESENCE



## LET'S HELP YOU!



+91 99099 06782  
+91 99099 06783



sales@toplineswitchgear.com  
sales1@toplineswitchgear.com

### Topline Switchgear Pvt. Ltd.



**Switchgear Unit (HO)**  
Survey No: 797/1P, Opp. Ridhi Plastic,  
Vill: Vadsar, Ta: Kalol,  
Gandhinagar · 382721, Gujarat, India



**TLT Unit**  
Survey No: 799/001, Lakshamanpura,  
Next to GGS Zalora II, Kadi-Thol Road,  
Mehsana · 382165, Gujarat, India



[www.toplineswitchgear.com](http://www.toplineswitchgear.com)